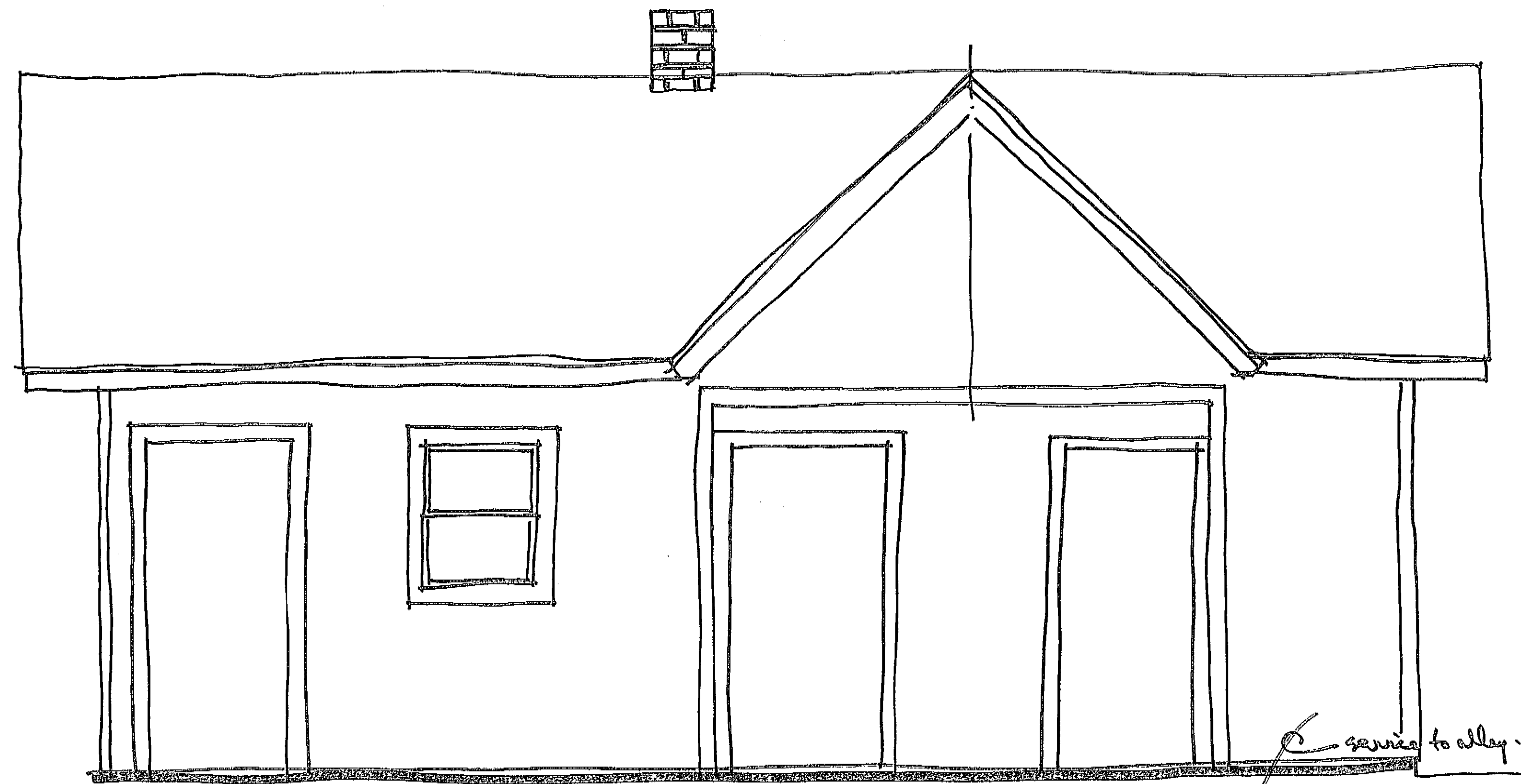
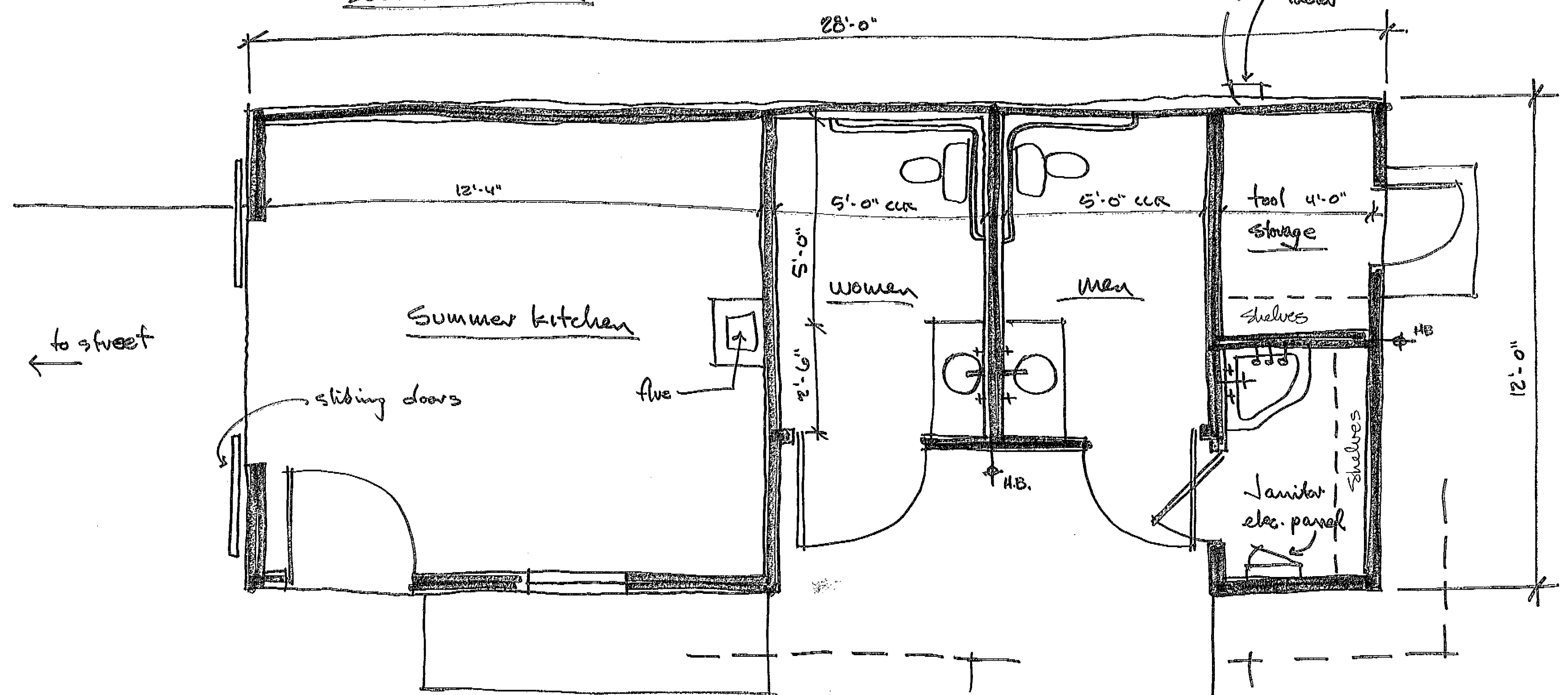


West elevation
1/2" = 1'-0"



South elevation



"Carrriage House" Outbuilding
1/2" = 1'-0"

376 S.P.	Ernest K. Robeson, Architect	STERLING MOORMAN HOUSE CITY OF CHENEY HISTORIC PRESERVATION COMMISSION OUTBUILDING SCHEMATIC DESIGN	A-5
----------	------------------------------	--	-----